

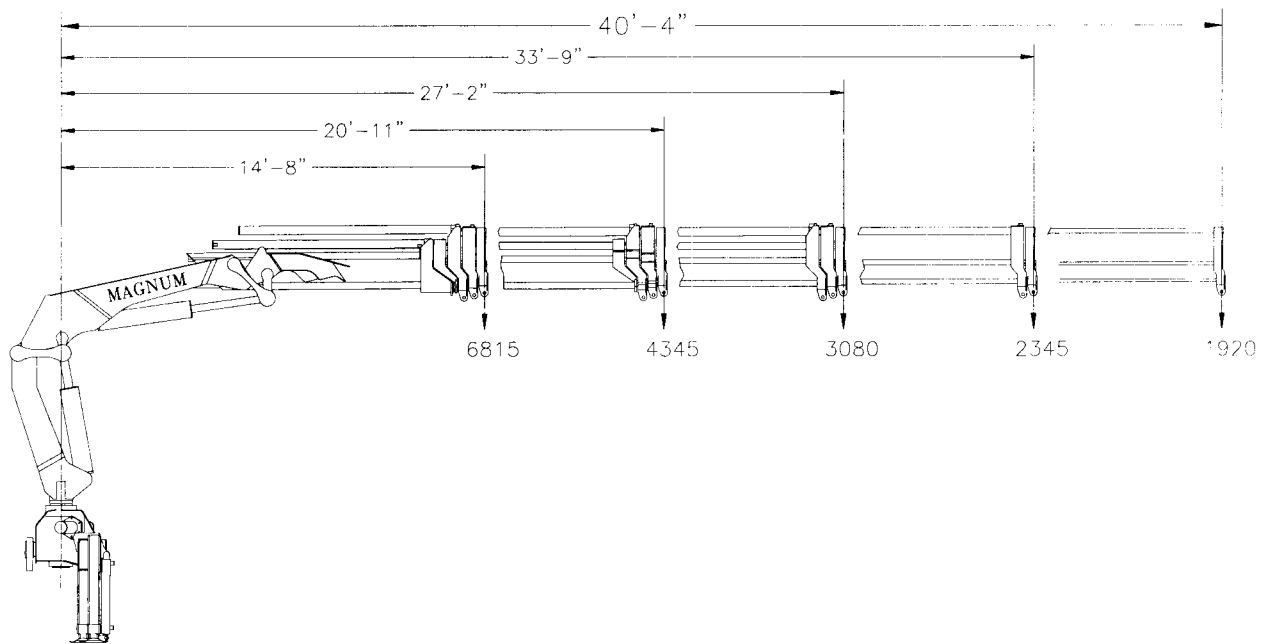
MAGNUM 150-4H TECHNICAL SPECIFICATION

Crane Rating: 104250 ft-lbs. (14.5 Meter-Ton)

Basic Data

Nominal Crane Rating	100,180 ft-lbs	13.9 Meter-Ton
Hydraulic outreach and capacity	6815 lbs @ 14' 8"	3098 kg @ 4.48m
	4345 lbs @ 20' 11"	1975 kg @ 6.37m
	3080 lbs @ 27' 2"	1400 kg @ 8.26m
	2345 lbs @ 33' 9"	1066 kg @ 10.19m
	1920 lbs @ 40' 4"	873 kg @ 12.28m
Vertical Reach with 46" mounting height	53' 1"	16.2 m
Crane Weight	5900 lbs	2682 kg
Slewing Angle	400 degrees	400 degrees
Hydraulic pump capacity	13.5 GPM	50 l/min
Hydraulic system pressure	3900 PSI	270 Bar
Stabilizer Spread	18' Hydraulic	5.5 m Hydraulic
Stabilizer leg extend	24" Hydraulic	0.61 m Hydraulic

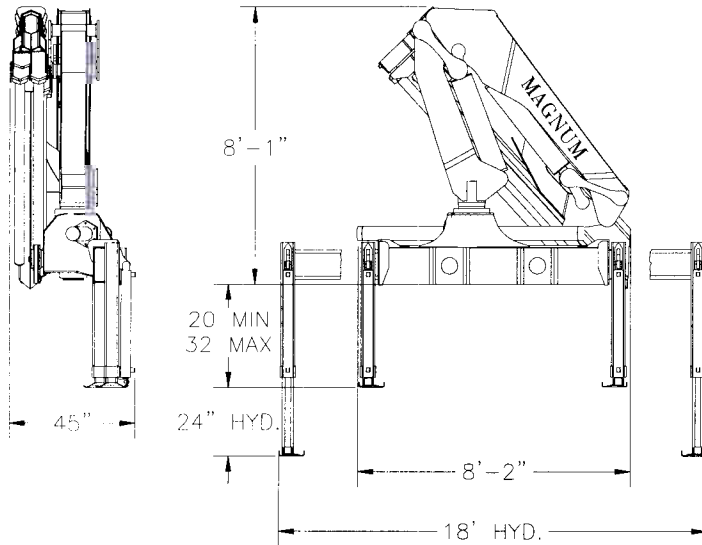
150-4H Lifting Capacities



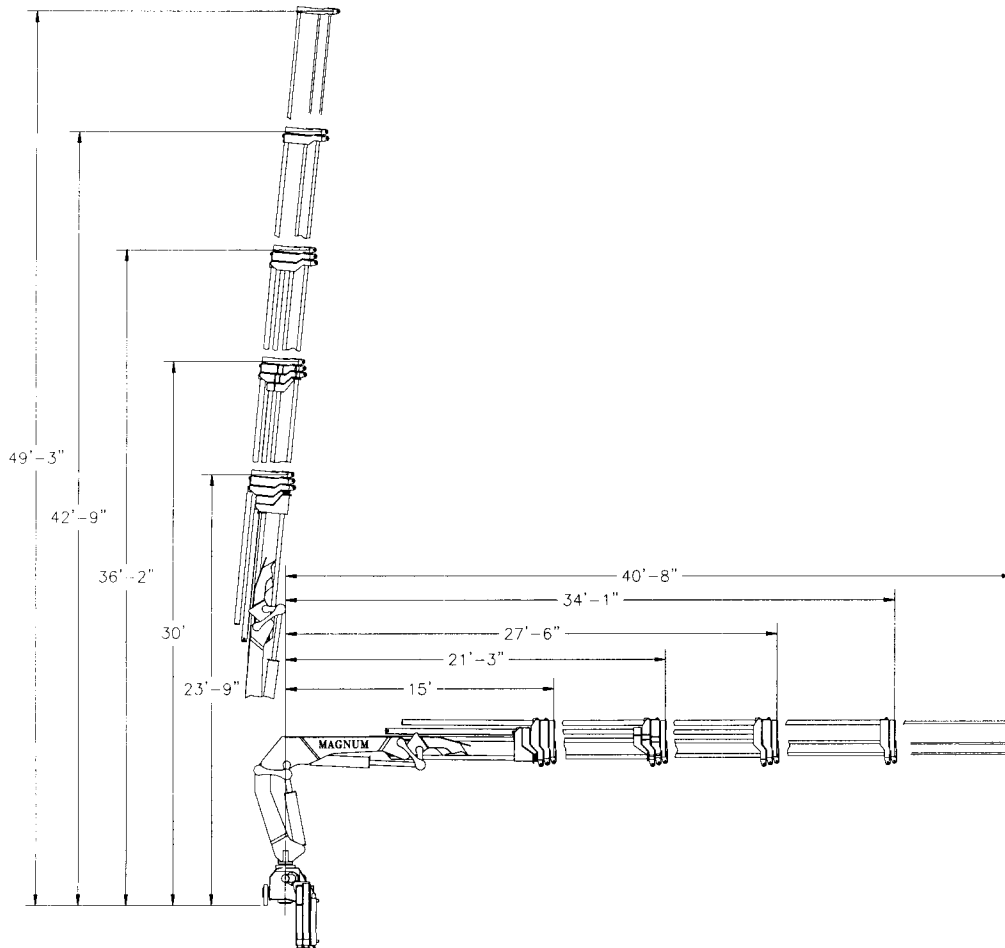
MAGNUM 150-4H TECHNICAL SPECIFICATION

Crane Rating: 104250 ft-lbs. (14.5 Meter-Ton)

MAGNUM 150-4H Stowed Dimensions



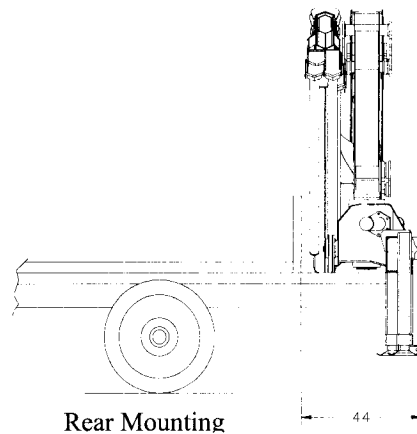
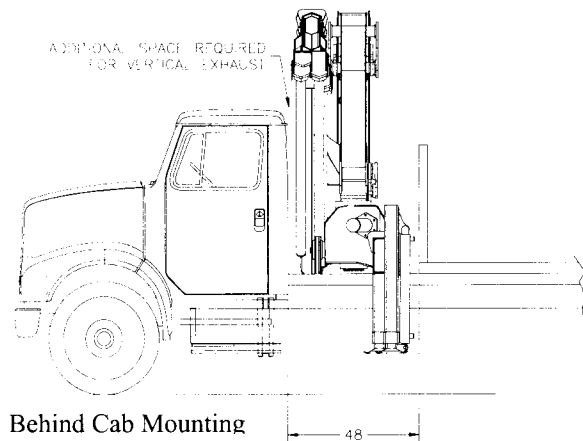
MAGNUM 150-4H Boom Geometry



MAGNUM 150-4H TECHNICAL SPECIFICATION

Crane Rating: 104250 ft-lbs. (14.5 Meter-Ton)

Magnum 150-4H Installation Layouts



Features

The Magnum Series of articulated cranes have been carefully designed to incorporate the latest crane innovations and technical advances both in materials and design. Blending both North American and European design and experience, have resulted in a high performance, simple rugged design. European DIN 15018, EN 130001 and ANSI B30.22 standards were referenced for all design parameters. 3D Solid Modeling CAD and FEA software was used for design and stress analysis. Crane series are fatigue/ cycle tested to confirm durability. Crane rating is DIN 15018 H1/B3.

Structural

Fine grained high tensile steels are used throughout the crane. The boom assemblies are large welded box sections providing the optimum stiffness to weight ratio. This ensures lower boom deflection for better load control.

Rotation System

Rack and pinion rotation system is used, incorporating a machined steel rack and bolted rotation cylinders for ease of maintenance.

Stabilizer System

Post type square stabilizer legs are utilized. Cylinders are not subjected to side loads imposed by the crane, which prolongs cylinder life.

Hydraulic System

The hydraulic system is medium pressure open center type. System pressure is limited to 3900 psi (270 bar) for extended component life. All cylinders are dual acting with hard chromed rods. Load bearing cylinders are equipped with Counter balance valves. Stabilizer leg cylinders are equipped with load holding check valves, and manual shut off valves. SAE hoses and JIC fitting are used throughout.

Controls

Dual side ground controls are standard .
Optional controls:
Single or dual side stand-up controls.
Cable or Radio Remote
Rider seat with joystick controls

Magnum Cranes

Manufactured By:
Magnum Industries, A Division of ACS Inc.
380 Vansickle Rd Unit 400
St Catharines Ontario, Canada, L2R 6P7
(905)-641-1642
Fax: (905)-641-1963

Magnum Ind. reserves the right to change specifications and design without notice