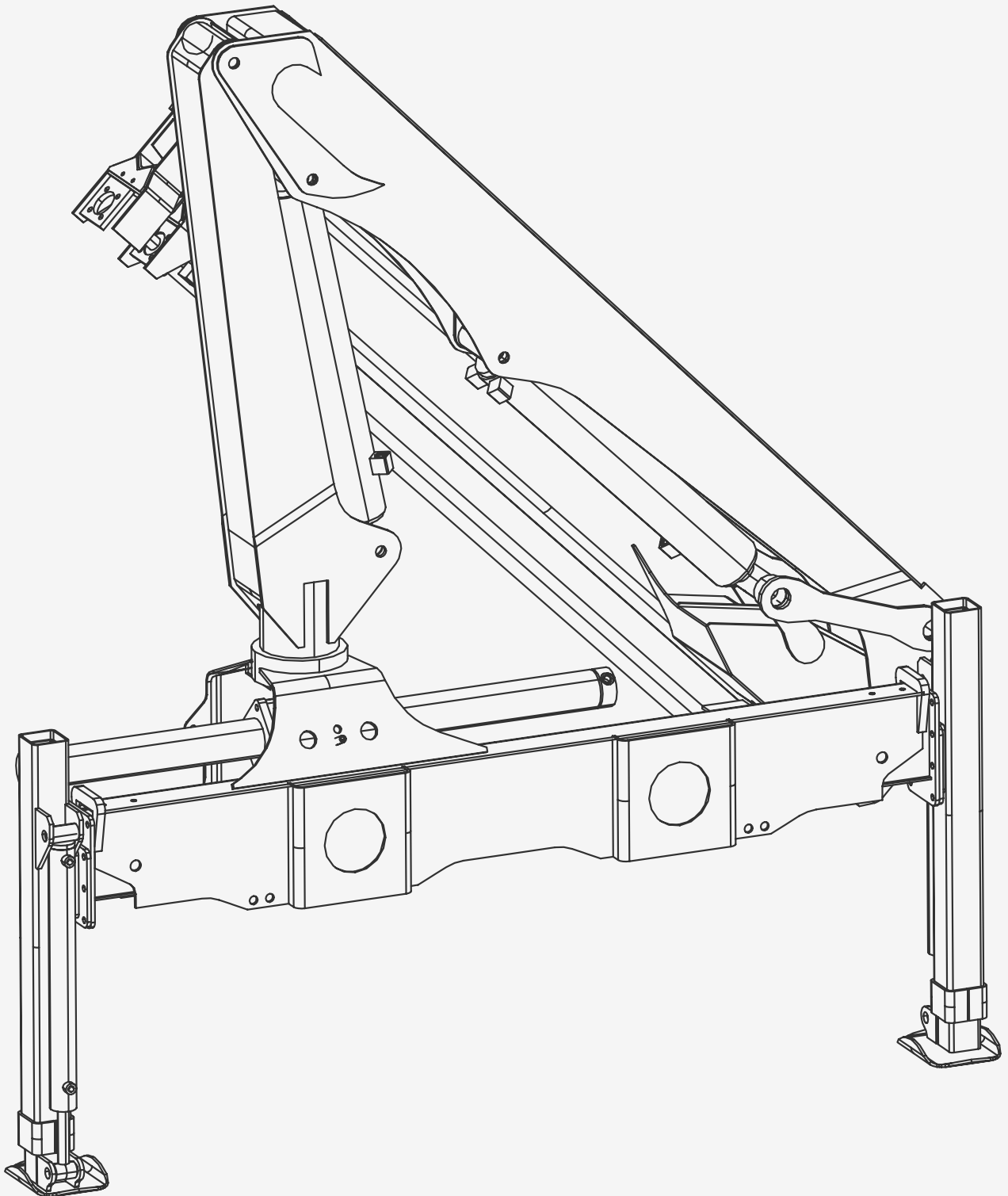


Magnum 060-2H

ARTICULATING CRANE

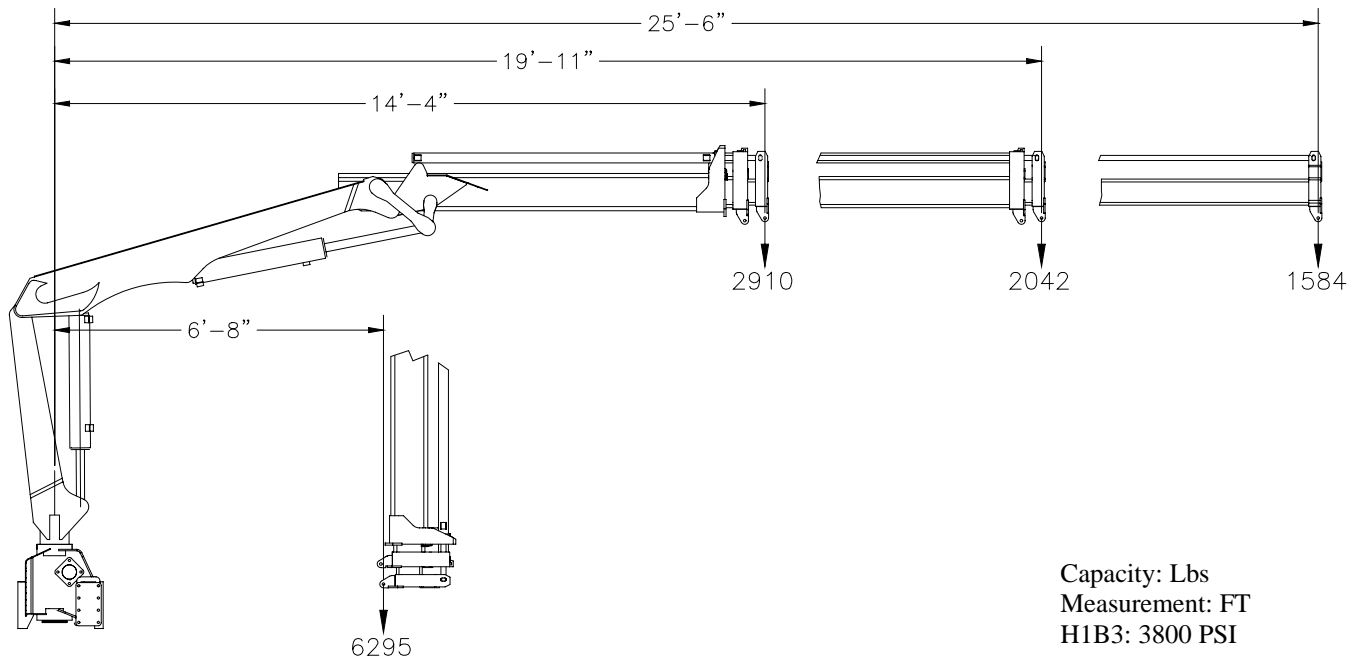


Technical Specifications: 060-2H

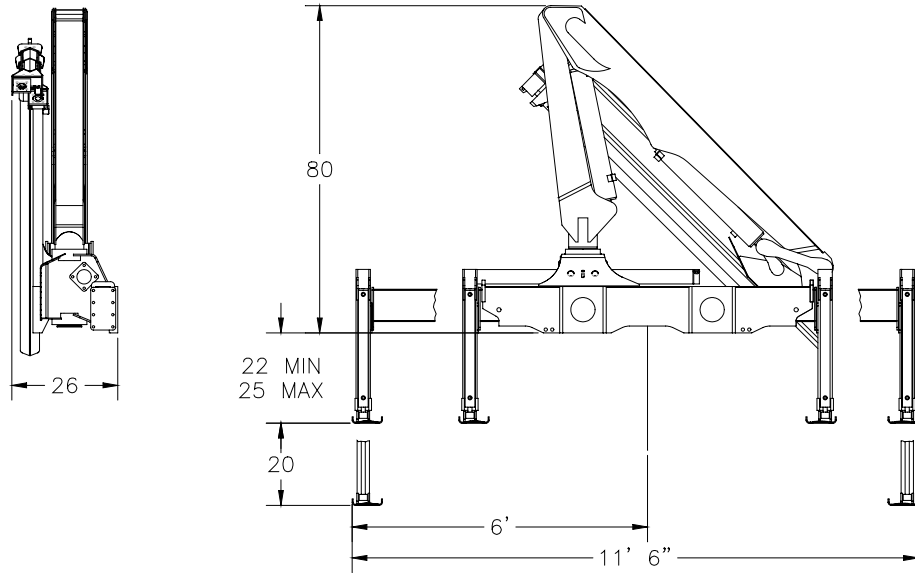
Basic Data

Nominal Crane Rating	41656 ft-lbs	5.8 Meter-Ton
Hydraulic outreach and capacity	6295 lbs @ 6' 8"	2855 kg @ 2.03 m
	2913 lbs @ 14' 4"	1324 kg @ 4.37 m
	2042 lbs @ 19'	928 kg @ 6.07 m
	1584 lbs @ 25' 6"	720 kg @ 7.77 m
Vertical Reach with 46" mounting	36' 7"	11.18 m
Crane weight	2500 lbs	1136 kg
Slewing Angle	390 degrees	390 degrees
Hydraulic pump capacity	5.5 Gpm	21 l/min
Hydraulic system pressure	3800 psi	260 bar
Stabilizer spread-Standard	11 ft 6 in	3.51 meters
Stabilizer legs-Hydraulic extend	20 in	508 mm

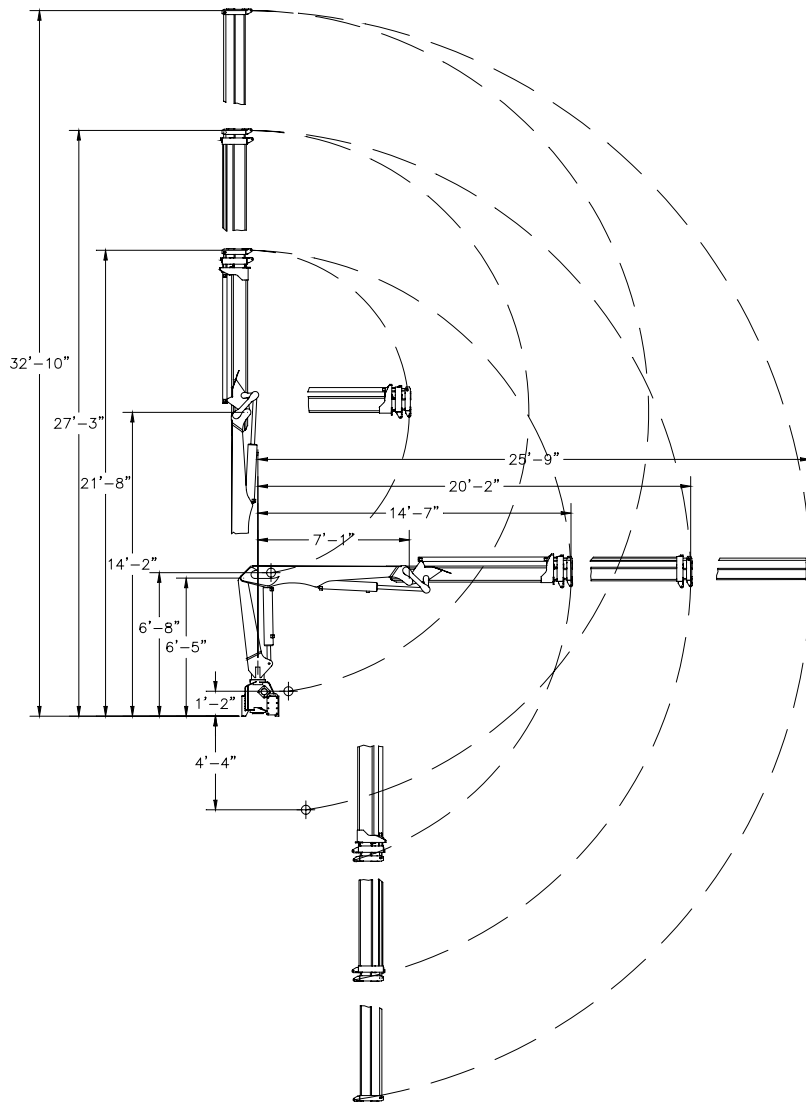
060 -2H Lifting Capacities



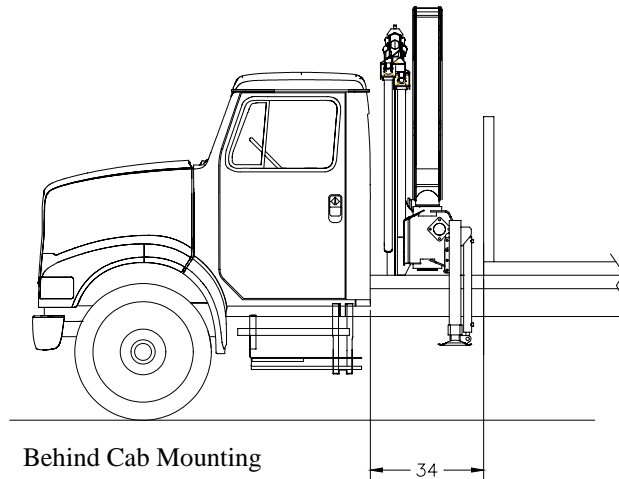
Magnum 060-2H Basic Dimensions



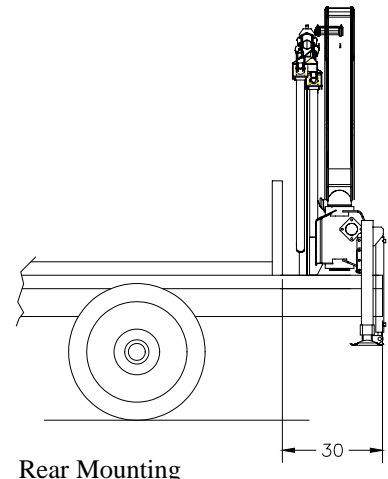
Magnum 060-2H Boom Geometry



Magnum 060–2H Installation Layouts



Behind Cab Mounting



Rear Mounting

Features

The Magnum Series of articulated cranes have been carefully designed to incorporate the latest crane innovations and technical advances both in materials and design. Blending both North American and European design and experience, have resulted in a high performance, simple rugged design.

European DIN 15018, EN 130001 and ANSI B30.22 standards were referenced for all design parameters. 3D Solid Modeling CAD and FEA software was used for design and stress analysis. Crane series are fatigue/ cycle tested to confirm durability. Crane rating is DIN 15018 H1/B3.

Structural

Fine grained high tensile steels are used throughout the crane. The boom assemblies are large welded box sections providing the optimum stiffness to weight ratio. This ensures lower boom deflection for better load control.

Rotation System

Rack and pinion rotation system is used, incorporating a machined steel rack and bolted rotation cylinders for ease of maintenance.

Stabilizer System

Post type square stabilizer legs are utilized. Cylinders are not subjected to side loads imposed by the crane which prolongs cylinder life.

Hydraulic System

The hydraulic system is medium pressure open center type. System pressure is limited to 3800 PSI (260 bar) for extended component life. All cylinders are dual acting with hard chromed rods.

Load bearing cylinders are equipped with Counter balance valves. Stabilizer leg cylinders are equipped with load holding check valves, and manual shut off valves. SAE hoses and JIC fitting are used throughout.

Controls

Dual side ground controls are standard .

Optional controls:

Single or dual side stand-up controls.

Cable or Radio Remote

Rider seat with joystick controls

Magnum Cranes

Manufactured By:

ACS Inc.

380 Vansickle Rd Unit 400

St Catharines Ontario, Canada, L2R 6P7

(905)-641-1642

ACS reserves the right to change specifications and design without notice

Document Number: M060-002A