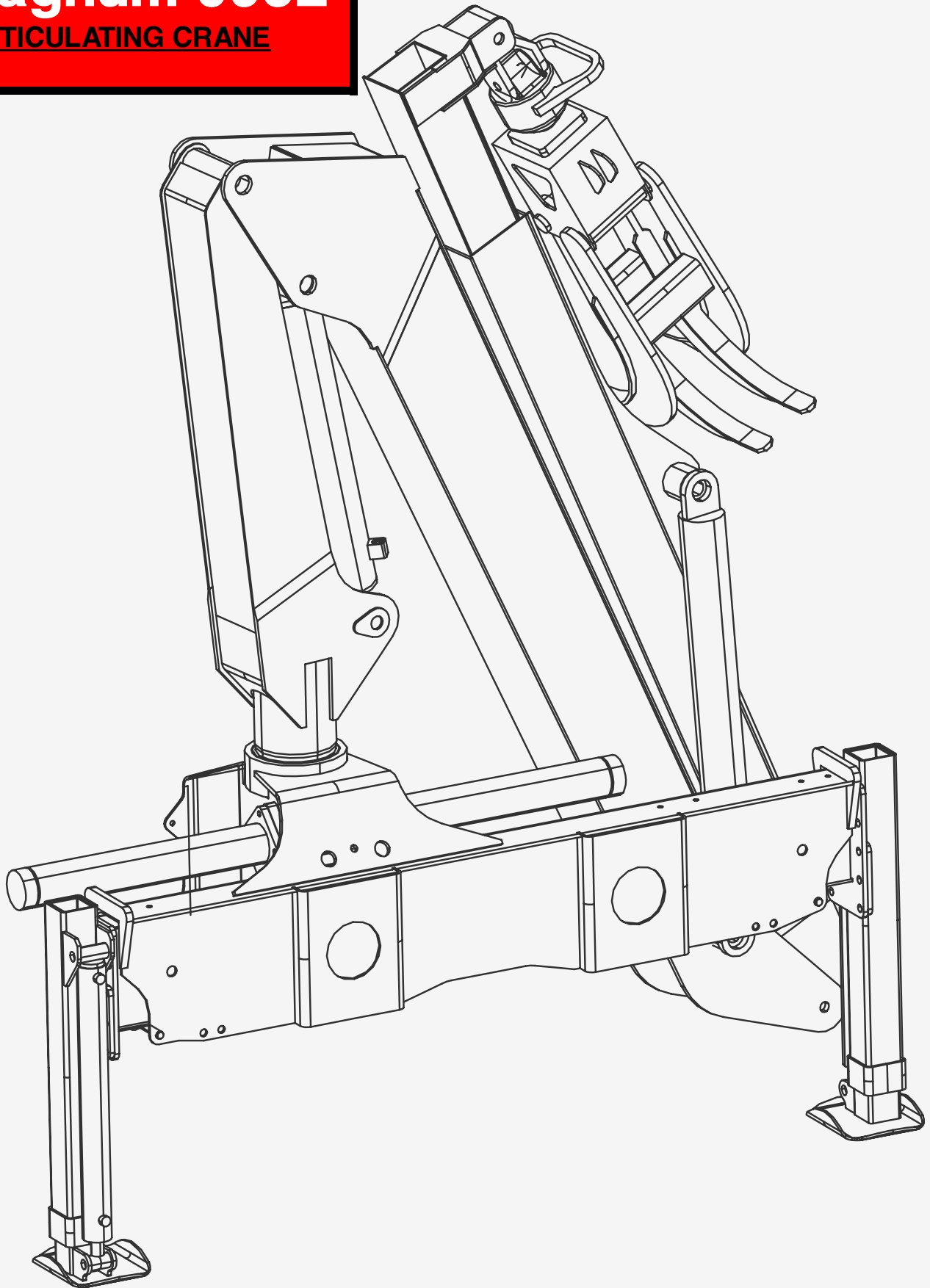


Magnum 095L

ARTICULATING CRANE

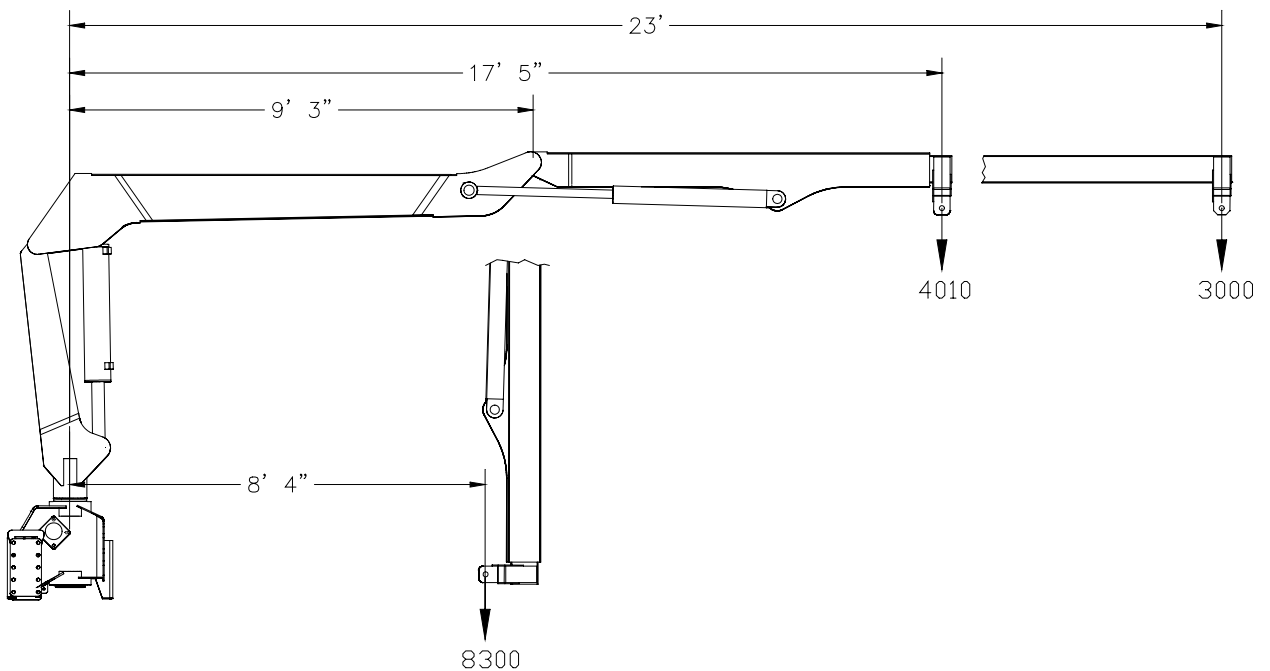


Technical Specifications

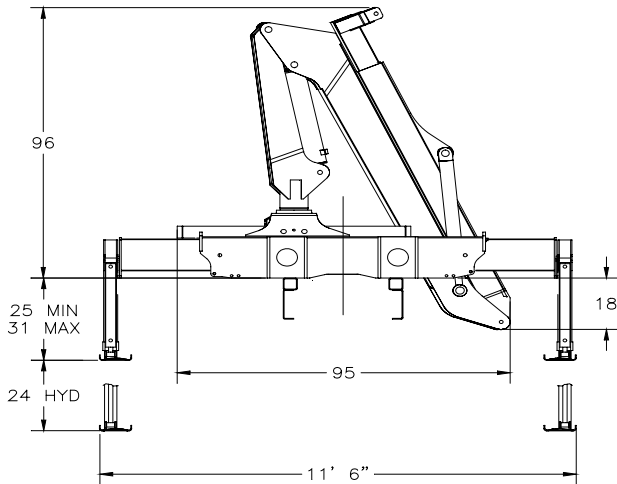
Basic Data

Nominal Crane Rating	69,000 ft-lbs	9.5 Meter-Ton
Hydraulic outreach and capacity	8300 lbs @ 8' 4"	3775 kg @ 2.54 m
	4000 lbs @ 17' 5"	1820 kg @ 5.3 m
	3000 lbs @ 23'	1365 kg @ 7.0 m
Vertical Reach with 46" mounting height	35'	10.7 m
Crane weight	3550 lbs	1614 kg
Slewing Angle	390 degrees	390 degrees
Hydraulic pump capacity	10.5 Gpm	40 l/min
Hydraulic system pressure	3500 psi	240 bar
Stabilizer spread-Standard	11 ft 6 in	3.5 meters
Stabilizer spread-Optional	15 ft 6 in	4.75 m
Stabilizer legs-Hydraulic extend	24 in	.61 m

095L Lifting Capacities



095 L Basic Dimensions



Features

The Magnum Series of articulated cranes have been carefully designed to incorporate the latest crane innovations and technical advances both in materials and design.

It is a blend of both North American and European design and experience resulting in a high performing, simple rugged serviceable design.

European DIN 15018, EN 130001 and ANSI B30.22 standards were referenced for all design parameters.

Cranes series are fatigue/ cycle tested to confirm durability

Cranes are rated to DIN 15018 H1/B4.

The model 100 L has been specifically designed as foldable timber/municipal loader. It can be stowed across the width of the truck without having to remove the grapple. Body may be raised with loader in stowed position.

Structural

Fine grained high tensile (100,000 psi yield) steels are used throughout the crane. This permits the crane to absorb shock loads easily. The boom assemblies are large welded box sections providing the optimum stiffness to weight ratio. This ensures lower boom deflection for better load control. All rotating pins are induction hardened and bushed for increased service life.

Hydraulic System

The hydraulic system is medium pressure open center type. System pressure is limited to 3500 psi (240 bar) for extended component life. All cylinders are dual acting with hard chromed rods.

Load bearing cylinders are equipped with line rupture protection valves. Stabilizer leg cylinders are equipped with load holding check valves.

SAE hoses and JIC fitting are used throughout.

Rotation System

Rack and pinion rotation system is used, incorporating a machined steel rack and bolted rotation cylinders for ease of maintenance. Cross-over counterbalance valves control rotation as well as limiting pressure surges.

Stabilizer System

Post type square stabilizer legs are utilized. Cylinders are not subjected to side loads imposed by the crane which prolongs cylinder life.

Hydraulic powered stabilizer beams are optional.

Controls

Dual side ground controls are standard .

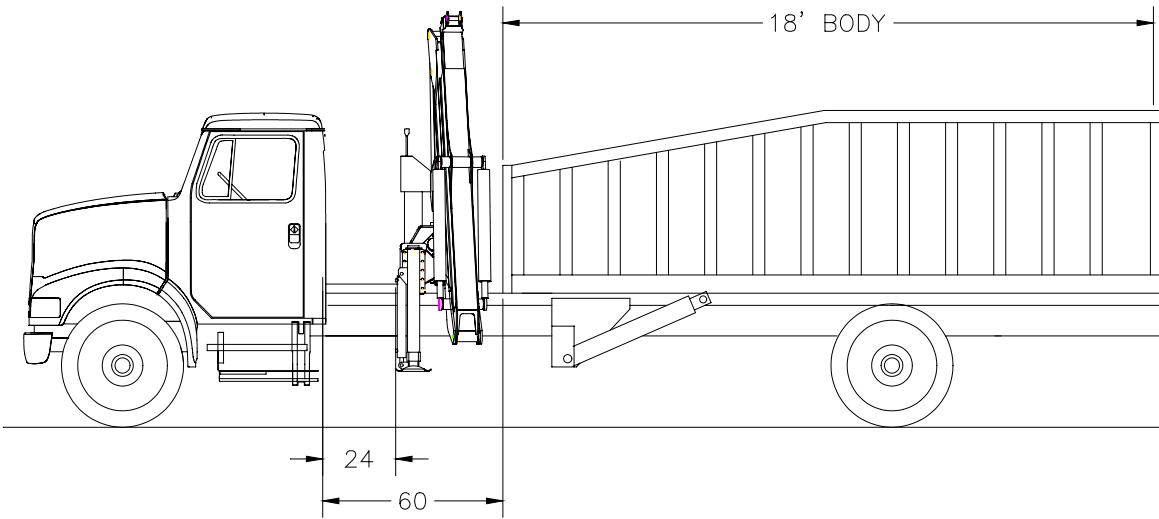
Optional controls:

Single or dual side stand-up controls.

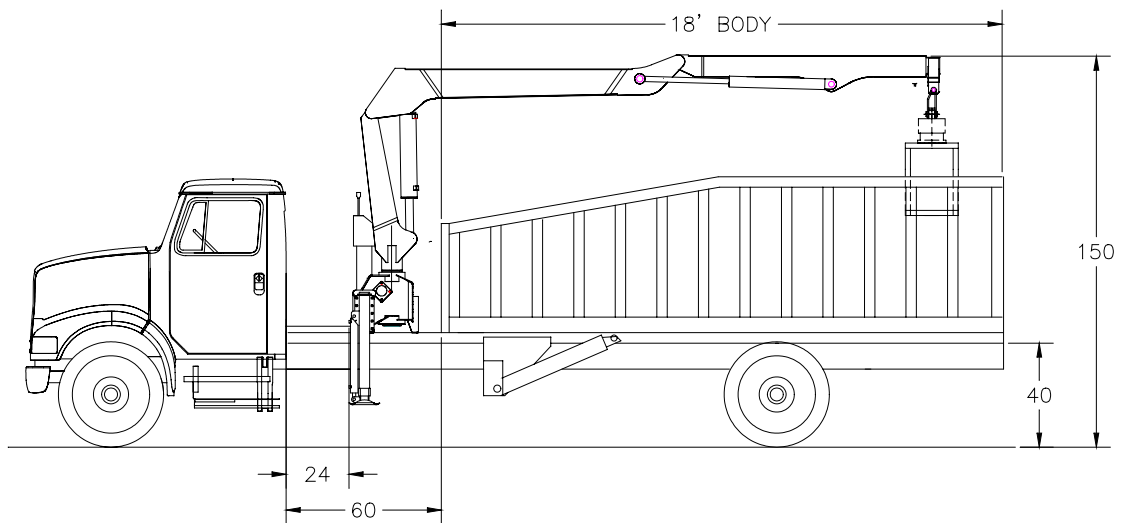
Cable or Radio Remote

Rider seat with joystick controls

095 L Installation Layouts



Loader stowed in Transverse Position



Loader stowed over body

Magnum Cranes

Manufactured By:

ACS Inc.

380 Vansickle Rd Unit 400

St Catharines Ontario, Canada, L2R 6P7

(905)-641-1642

Fax: (905)-641-1963

Document Number: M095-001