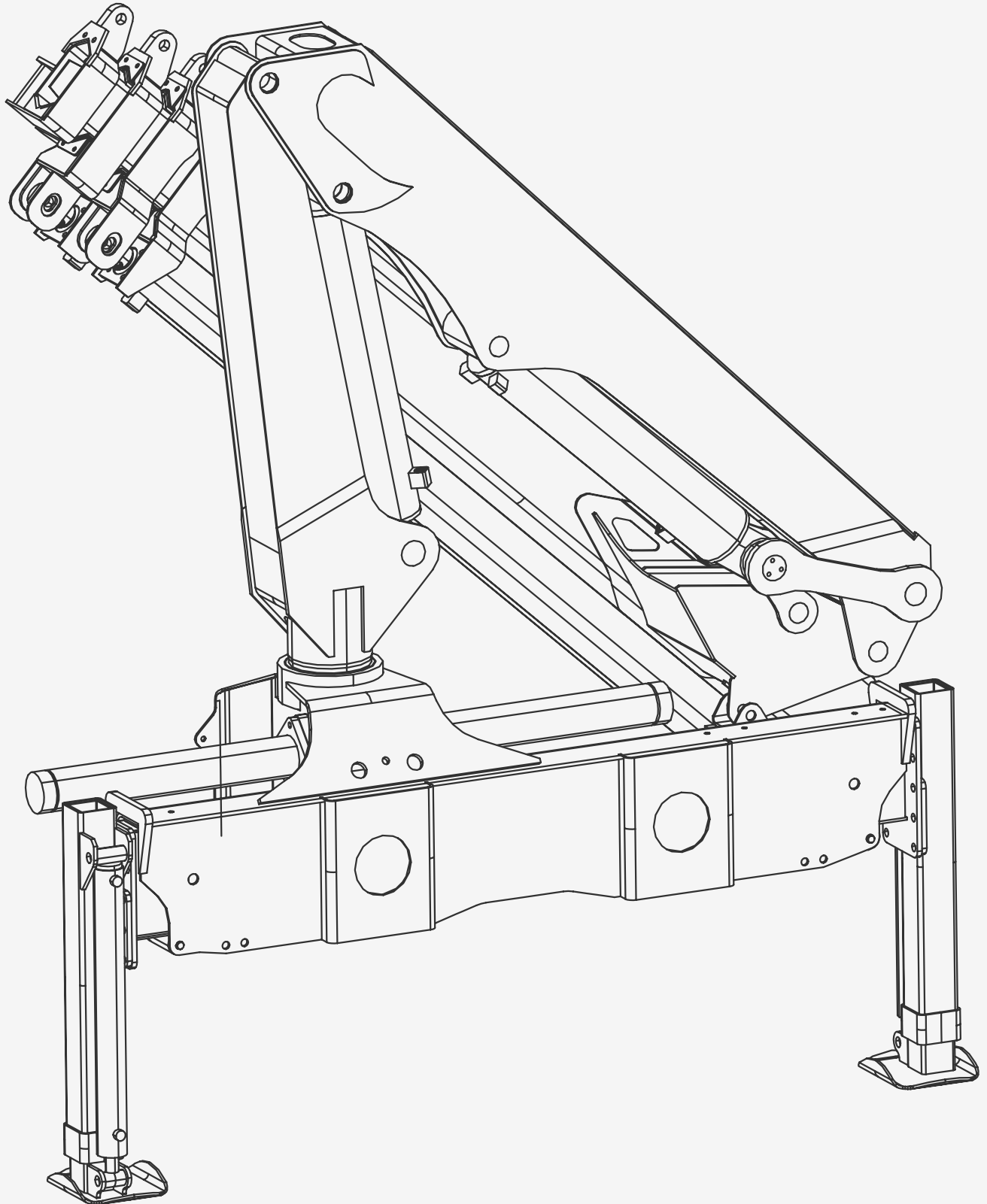


Magnum 100-3H

ARTICULATING CRANE

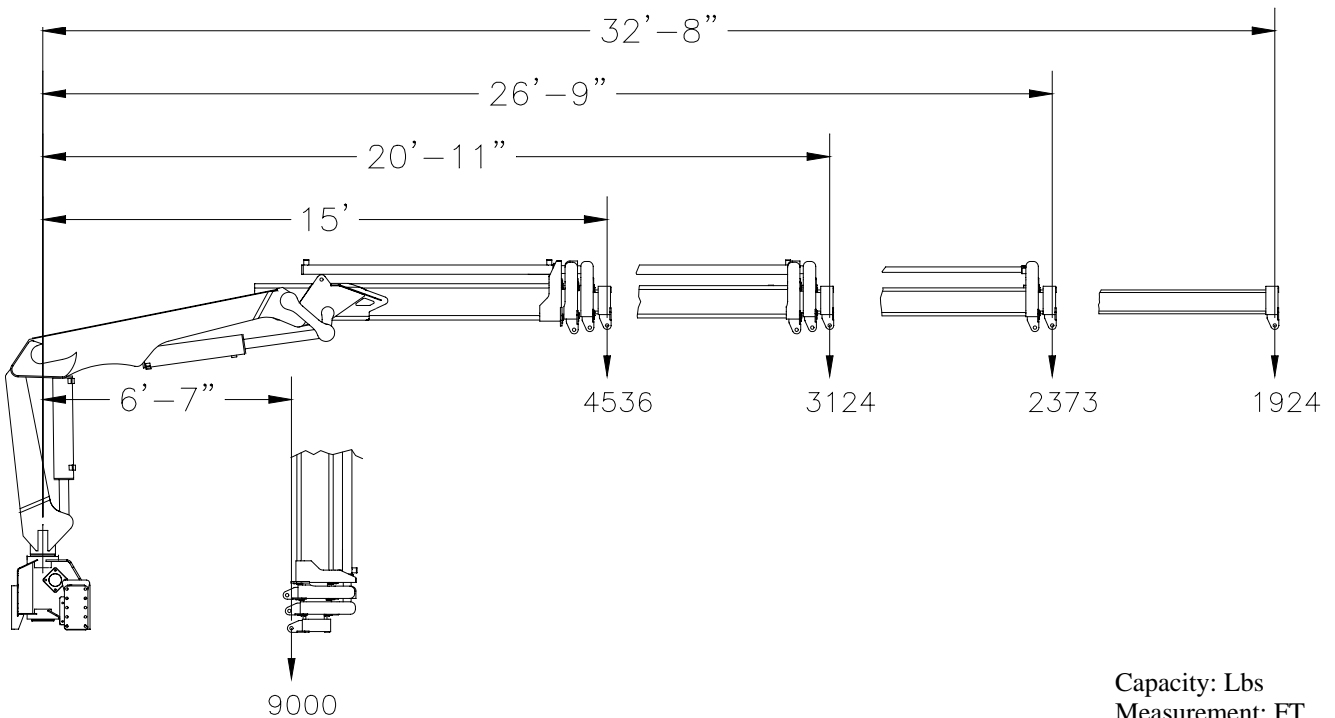


Technical Specifications: 100-3H

Basic Data

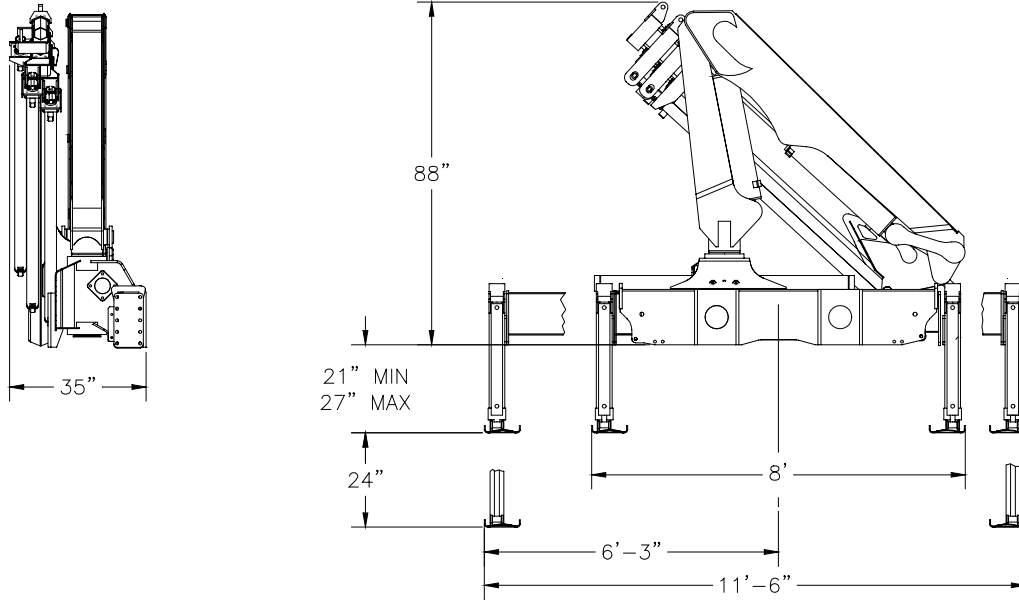
Nominal Crane Rating	68040 ft-lbs	9.4 Meter-Ton
Hydraulic outreach and capacity	9000 lbs @ 6' 7"	4.09 kg @ 2.03 m
	4536 lbs @ 15'	2062 kg @ 4.60 m
	3124 lbs @ 20'	1420 kg @ 6.38 m
	2373 lbs @ 26' 9"	1078 kg @ 8.18 m
	1924 lbs @ 32' 8"	875 kg @ 9.98 m
Vertical Reach with 46" mounting	44'	13.41 m
Crane weight	3765 lbs	1710 kg
Slewing Angle	390 degrees	390 degrees
Hydraulic pump capacity	10.5 Gpm	40 l/min
Hydraulic system pressure	3600 psi	245 bar
Stabilizer spread-Standard	11 ft 6 in	3.51 meters
Stabilizer spread-Optional	15 ft 6 in	4.72 meters
Stabilizer legs-Hydraulic extend	24 in	610 mm

100-3H Lifting Capacities

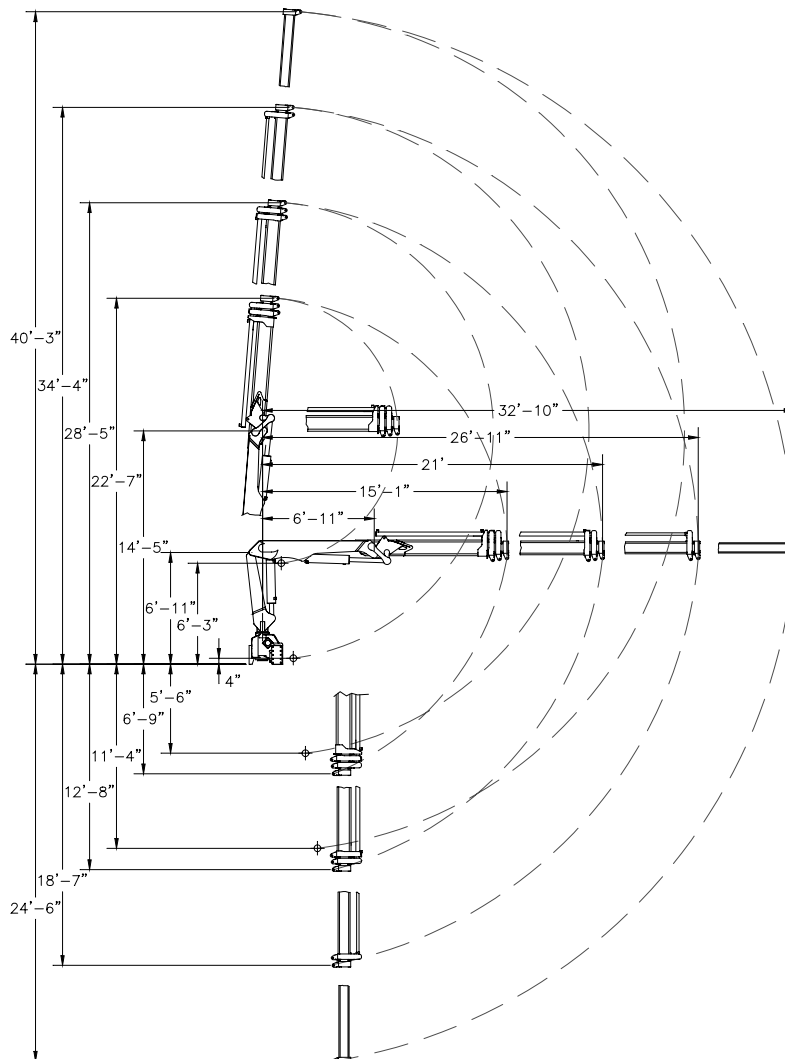


Capacity: Lbs
 Measurement: FT
 H1B3: 3600 PSI

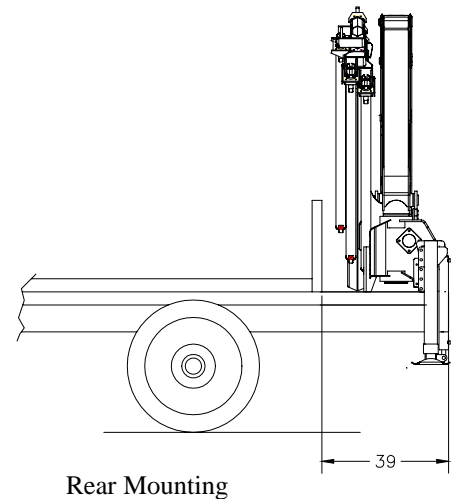
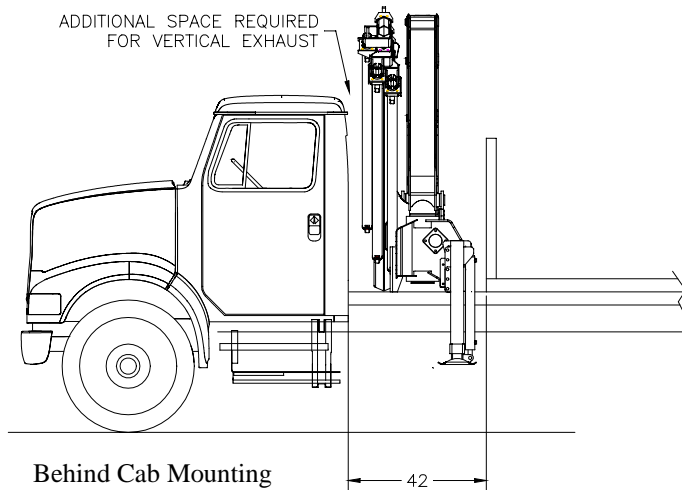
Magnum 100-3H Basic Dimensions



Magnum 100-3H Boom Geometry



Magnum 100-3H Installation Layouts



Features

The Magnum Series of articulated cranes have been carefully designed to incorporate the latest crane innovations and technical advances both in materials and design. Blending both North American and European design and experience, have resulted in a high performance, simple rugged design.

European DIN 15018, EN 130001 and ANSI B30.22 standards were referenced for all design parameters. 3D Solid Modeling CAD and FEA software was used for design and stress analysis. Crane series are fatigue/ cycle tested to confirm durability. Crane rating is DIN 15018 H1/B3.

Structural

Fine grained high tensile steels are used throughout the crane. The boom assemblies are large welded box sections providing the optimum stiffness to weight ratio. This ensures lower boom deflection for better load control.

Rotation System

Rack and pinion rotation system is used, incorporating a machined steel rack and bolted rotation cylinders for ease of maintenance.

Stabilizer System

Post type square stabilizer legs are utilized. Cylinders are not subjected to side loads imposed by the crane which prolongs cylinder life.

Hydraulic System

The hydraulic system is medium pressure open center type. System pressure is limited to 3600 PSI (245 bar) for extended component life. All cylinders are dual acting with hard chromed rods. Load bearing cylinders are equipped with Counter balance valves. Stabilizer leg cylinders are equipped with load holding check valves, and manual shut off valves. SAE hoses and JIC fitting are used throughout.

Controls

Dual side ground controls are standard .
Optional controls:
Single or dual side stand-up controls.
Cable or Radio Remote
Rider seat with joystick controls

Magnum Cranes

Manufactured By:
ACS Inc.
380 Vansickle Rd Unit 400
St Catharines Ontario, Canada, L2R 6P7
(905)-641-1642

ACS reserves the right to change specifications and design without notice

Document Number: M100-003